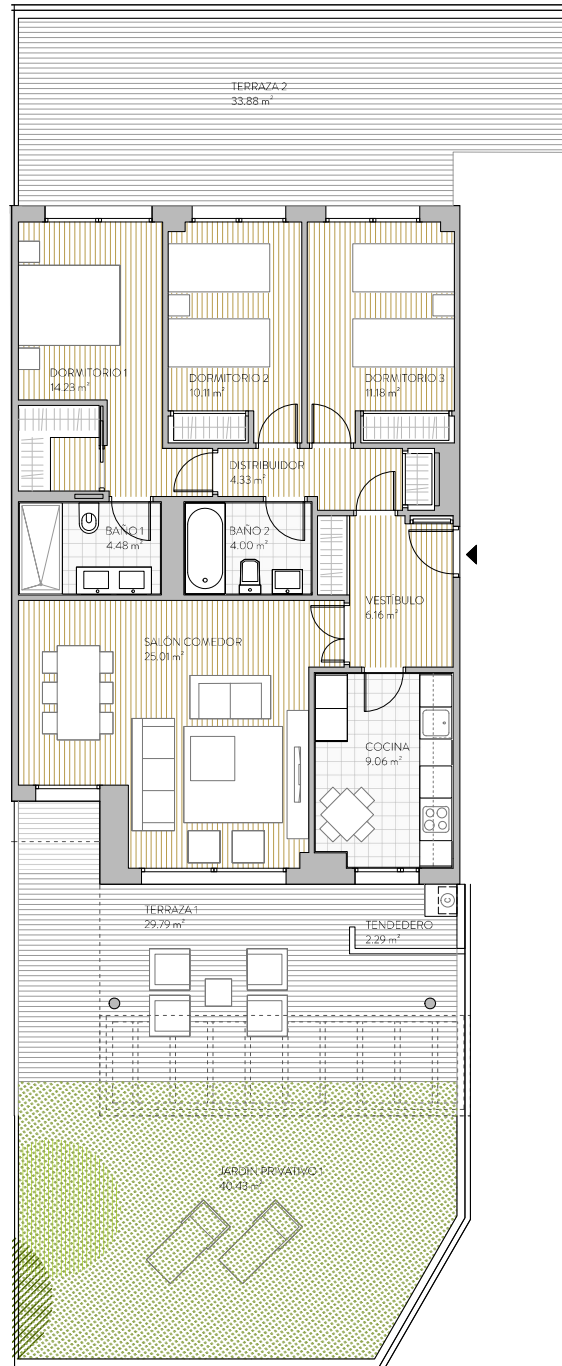


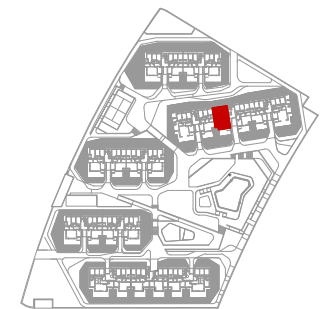
PORTAL 4 BAJO A
 3D-O4-S (3 DORMITORIOS)
 1 UNIDAD



THE
TOWN
 BROADILLA

CUADRO DE SUPERFICIES	
VESTIBULO	6.16 m ²
DISTRIBUIDOR	4.33 m ²
SALÓN-COMEDOR	25.01 m ²
COCINA	9.06 m ²
DORM1	14.23 m ²
DORM2	10.11 m ²
DORM3	11.18 m ²
BAÑO 1	4.48 m ²
BAÑO 2	4.00 m ²
TENEDERO	2.29 m ²
SUP UTIL TOTAL	90.85 m ²

SUP CONST C COMUNES	125.34 m ²
SUP CONST TERRAZA/JARD.	112.68 m ²
SUP CONST TOTAL	238.02 m ²



PLANTA BAJA

