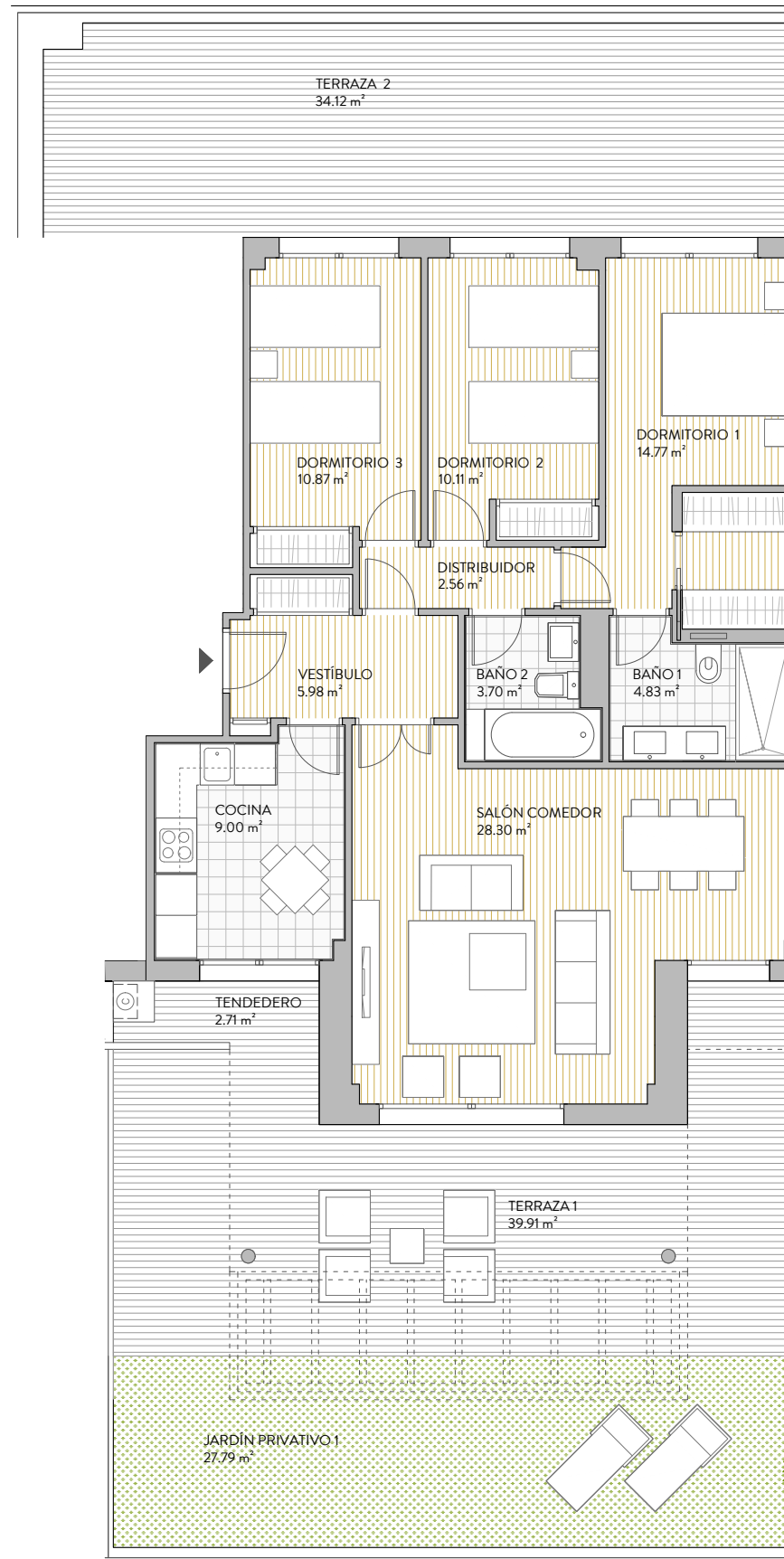


PORTAL 10 BAJO B

3D-12 (3 DORMITORIOS)
1 UNIDAD



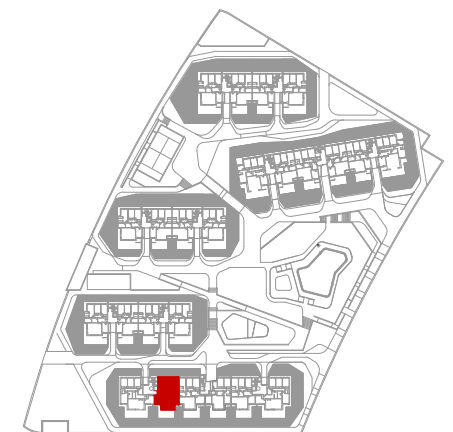
THE
TOWN
BOADILLA

| CUADRO DE SUPERFICIES | |
|-----------------------|----------------------|
| VESTIBULO | 5.98 m ² |
| DISTRIBUIDOR | 2.56 m ² |
| SALON-COMEDOR | 28.30 m ² |
| COCINA | 9.00 m ² |
| DORM1 | 14.77 m ² |
| DORM2 | 10.11 m ² |
| DORM3 | 10.87 m ² |
| BAÑO 1 | 4.83 m ² |
| BAÑO 2 | 3.70 m ² |
| TENEDERO | 2.71 m ² |
| SUP UTIL TOTAL | 92.83 m ² |

SUP CONST C COMUNES 128.07 m²

SUP CONST TERRAZA/JARD. 111.51 m²

SUP CONST TOTAL 239.58 m²



PLANTA BAJA

ESCALA GRÁFICA

0 1 2 3 4 5M.